

Wee Peanut



Wee Peanut is a classic cable cardigan for any boy or girl.

This is the perfect last minute baby gift.

This is knit top down, with long sleeves.

The adorable handmade button can be found in the Etsy shop: [Katrinkles](#)

Yarn – Anzula Cricket

Needle – 7 us (4.50 mm) or what you need to get gauge
6 us (4.00 mm)

Gauge – 20.0 stitches = 4 inches

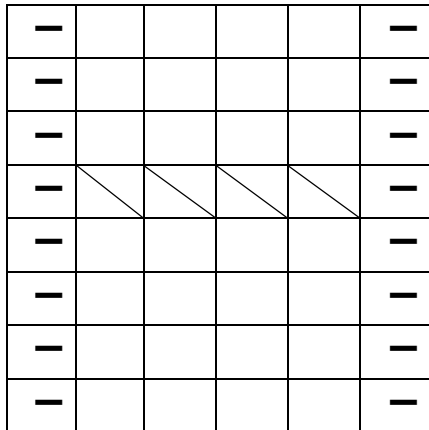
Yardage – 200(275,350,450)

Sizes – 0-3 months (3-6 months,6-12 months, 12-18 months)

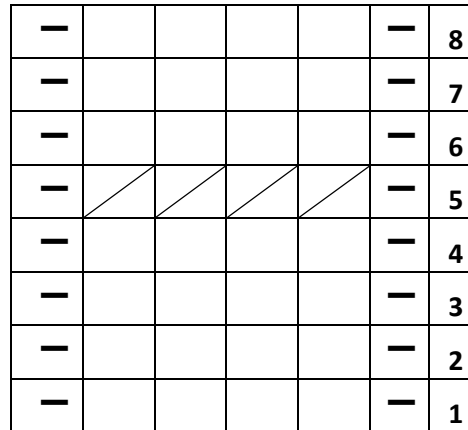
Chest measurements – 16”(18”,19”,21”)

Notions – 4(4,4,5) buttons, ¾” or 1” size

WS - Wrong side **RS** - Right side **YO** - Yarn over **Sm**- Slip marker **Pm** - Place marker
K2tog- Knit two stitches together **Rm** – Remove marker **Kfb** - Knit into the front and back of the stitch



Left Cable



Right Cable

	Knit
—	Purl
/	C4B - Slip two stitches onto cable needle and hold in back, knit 2, knit 2 from cable needle
	C4F - Slip two stitches onto cable needle and hold in front, knit 2, knit 2 from cable needle

Note – The left and right front cables are worked throughout the pattern from rows 6 to the bottom edging. Continue the cable pattern down the fronts.

Cast on **48(52,56,59)** stitches, using a long tail cast on, and the smaller needles

Row 1: (WS) Knit to the end

Row 2: (RS) Knit to the end

Row 3: (WS) Knit to the end

Row 4: (RS) (Buttonhole Row) Knit 2, YO, K2tog, Knit to the end, and at the same time, increase 2 stitches, evenly spaced, using a KFB **50(54,58,61)** stitches

Change to the larger needles

Row 5: (WS) Knit **11(12,13,14)**(front), Pm, knit **6(6,6,6)**(sleeve), Pm, knit **16(18,20,21)**(back), Pm, knit **6(6,6,6)**(sleeve), Pm, knit **11(12,13,14)**(front)

Row 6:(RS) Knit 4, purl 1, work left cable, purl 1, knit to 1 stitch before the next marker, (Kfb, Sm, Kfb, knit until you have 1 stitch before the next marker) Work 4 times, knit to the last 10 stitches, purl 1, work the right cable, purl 1, knit 4 (8 stitches increased)

Row 7:(WS) Knit 5, purl 4, knit 1, purl to the last 10 stitches, knit 1, purl 4, knit 5
 Work rows 6 and 7, 3 times total

Row 8:(RS) (Buttonhole Row) Knit 2, YO, K2tog, purl 1, work left cable, purl 1, knit to 1 stitch before the next marker, (Kfb, Sm, Kfb, knit until you have 1 stitch before the next marker) Work 4 times, knit to the last 10 stitches, purl 1, work the right cable, purl 1, knit 4 (8 stitches increased)

Row 9:(WS) Knit 5, purl 4, knit 1, purl to the last 10 stitches, knit 1, purl 4, knit 5

Work rows 6 and 7, 3 times total

Work rows 8 and 9 (Buttonhole Row), 1 time total

Work rows 6 and 7, 3 times total

Work rows 8 and 9 (Buttonhole Row), 1 time total

For size 0-3 months – Work rows 6 and 7, 1 time

For size 3-6 months – Work 6 and 7, 2 times

For size 6-12 months – Work rows 6 and 7, 3 times

For size 12-18 months – Work rows 6 and 7, 3 times, and then rows 8 and 9 (Buttonhole Row), 1 last time.

154(166,178,189) stitches

You will have a total of **13(14,15,16)** raglan increases.

Divide for the sleeves

Note – If you would like buttons all the way down the front, work a button hole row every 4th RS, like this, Knit 2, YO, K2tog.

Row 10: (RS) Knit 4, purl 1, work the left cable, purl 1, knit to the sleeves, Rm, slip the **32(34,36,38)** sleeve stitches onto a piece of scrap yarn, Rm, knit across the back, Rm, slip the sleeve **32(34,36,38)** stitches onto a piece of scrap yarn, Rm, knit to the last 10 stitches, purl 1, work the right cable, purl 1, knit 4

90(98,106,113) stitches

Row 11: (WS) Knit 5, purl 4, knit 1, purl to the last 10 stitches, knit 1, purl 4, knit 5

Row 12: (RS) Knit 4, purl 1, work the left front cable, purl 1, knit to the last 10 stitches, purl 1, work the right cable, purl 1, knit 4

Row 13: (WS) Knit 5, purl 4, knit 1, purl to the last 10 stitches, knit 1, purl 4, knit 5

Repeat rows 12 and 13, until the body of the sweater measures **5”(7”,9”,10”)** inches from the underarm

Edging

Row 1: (RS) Knit to the end

Row 2: (WS) Knit to the end

Row 3: (RS) Knit to the end

Work rows 2 and 3, **3(3,3,4)** times total

Row 4: (WS) Bind off knit wise

Sleeves

Note - Work each sleeve separately, in the round and place a start of round marker **32(34,36,38)** stitches

Leave a 6” tail, so you can sew close the hole under each arm **Use the larger needle**

Round 1: Knit to the end

Repeat round 1, until the sleeve measures **4 ¼”(6”,7 ½”,8 ½”)** inches, from the under arm, or to desired length.

Change to the smaller needles

Round 2: Purl to the end

Round 3: Knit to the end

Work rounds 2 and 3, **3(3,3,4)** times total

Bind off purl wise.

Repeat as worked for the 2nd sleeve

Finishing

Weave in your end, sew the buttons on, block and enjoy!